

LightPost

November/December 2011

Published for members of Northeastern Rural Electric Membership Corporation

Our Children - Our Future

Area youths honored for community involvement

Two area students, Stephanie Gall and Madyson Stricker, have recently been honored for their outstanding community service as winners of the 2011 Youth Power and Hope Awards Contest.

Electric Consumer, the statewide publication of Indiana's electric cooperatives, sponsored this contest which was open to Indiana fifth through eighth graders residing in a REMC service territory. The competition emphasizes the important role young Hoosiers play in their communities.

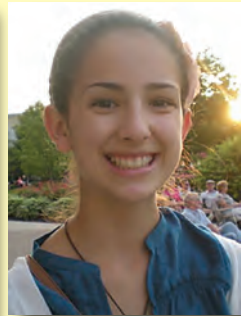
Each entrant completed an entry form, submitted an essay on community service, provided examples of his/her community involvement, and included a letter of reference. A panel of judges then selected five award winners. Those winners, including Gall and Stricker, were honored during the Indiana Statewide Association of Rural Electric Cooperatives' Annual Meeting in Indianapolis on Nov. 15. The students also attended a private luncheon and tour of Lucas Oil Stadium, home of the NFL's Indianapolis Colts.

Gall, the daughter of Timothy and Sharen Gall, is an eighth grader at Canterbury School. Her community service activities include performing for children at the Allen County Public Library, helping at a local preschool, volunteering for trash pick up with Fort Wayne Trails, participating in Girl Scouts, volunteering at her church, visiting the elderly at a local retirement home, and participating in her school's canned food drive. In addition, she gives her time to protect the Eagle Marsh — the largest preserve in Allen County and one of the largest wetland restorations in Indiana. She is also involved in the "Walk A Mile in Her Shoes" event for assault victims. The Galls are members of Northeastern REMC.

Stricker is a seventh grader at Indian Springs Middle School and is the daughter of James and Beth Stricker of South Whitley. Stricker is involved in Relay for Life for which she helped raise over \$22,000. She has collected and donated food for local food pantries, and was the top fundraiser for her school. She is active in 4-H club where she has also been a top fundraiser. Stricker has filled and wrapped boxes for Operation Christmas Child, decorated and sent Christmas cards to soldiers, volunteered for and supported Salvation Army, and helped raise funds for the American Cancer Society. Her parents are also members of Northeastern REMC.



Stricker



Gall

Free trip to Washington for 11th graders

High school juniors have a chance to join other Indiana youth on a trip of a lifetime. Applications are now available for the 2012 Electric Cooperative Youth Tour to Washington, D.C. Indiana's Touchstone Energy cooperatives have hosted the Youth Tour since 1960, providing hundreds of young Hoosiers the opportunity to visit our nation's capital and learn about the federal government and the cooperative utility industry. The trip begins on June 13 in Indianapolis and ends June 21.

Northeastern REMC is pleased to again provide this opportunity to two 11th grade students who live in the REMC's service area. This experience will provide students the chance to see historical sights, meet lawmakers in Indiana and Washington, make new friends, and learn how everyone, even young people, can be a leader and make a difference in the world. There will also be hands-on learning and safety sessions relating to the utility industry.

Approximately 75 students will be representing Indiana REMCs this year. Last year, over 1,550 students from across the country were in Washington for this conference.

Details and an application form for the tour can be found under "Current News" at nremc.com. Application deadline is March 1.

Northeastern REMC
A Touchstone Energy
Cooperative

4901 East Park 30 Drive
Columbia City, IN 46725

PSRST STD
U.S. POSTAGE
PAID
NORTHEASTERN
REMC

Incredible Savings For Our Members



Rebate information and money saving tips inside!

Questions? E-mail customerservice@nremc.com

LightPost

4901 East Park 30 Drive
Columbia City, IN 46725
260-625-3700 • 244-6111

Office Hours:

Monday–Friday, 7:30 a.m. - 4:30 p.m.

After office hours and on weekends or holidays, the telephone is answered by a Northeastern employee for trouble calls ONLY.

To Contact Us:

260-244-6111 (Columbia City) or 260-625-3700 (Fort Wayne).

FAX # 260-625-3407

www.nremc.com

Line Locating:

Please call 811 at least 2 full business days prior to digging.



Wishing You A Joyous Holiday Season And A Bright And Happy New Year



Whether it is heating your home, lighting your tree, or warming your oven, Northeastern REMC will be doing everything in our power this holiday season to ensure that you have dependable electric service when and where you need it.

But our commitment won't end when your tree comes down. We will continue striving to meet your expectations 365 days in the new year!

Your friends and neighbors at Northeastern REMC wish you bright and happy holidays!

Northeastern hoping to increase ORU funds to help charitable groups

In these difficult economic times, several local charitable organizations are getting much needed support due to the generosity of nearly 900 Northeastern REMC members volunteering to participate in the co-op's Operation Round Up program.

The purpose of Operation Round Up and the Northeastern REMC Community Trust, Inc. is to accumulate

and distribute funds for charitable purposes within our area. The source of these funds is members of Northeastern REMC who voluntarily have their electric bills rounded up to the nearest dollar each month.

Those eligible to apply for funds include all individuals in our service territory, and organizations with financial need. For the most part, funds will be provided to meet

(Continued - page 4)

Seeking 6th grade students:

Creating memories for life at Touchstone Energy Camp

In the past 10 years Touchstone Energy Camp has taught over 900 sixth grade students from across Indiana how to be safe around electricity, while also enjoying outdoor camp activities. Once again Northeastern REMC will continue this time-honored tradition and sponsor students to attend the 10th Anniversary Touchstone Energy Camp to be held June 6-9, at Camp Tecumseh in Brookston, Ind.

Sixth grade students residing in Northeastern's service area are encouraged to complete and submit an application (available on the Current News page of nremc.com) by March 1. Up to four students will be selected to participate in this free three-day program. Students will enjoy traditional outdoor camp activities such as horseback riding, zip lining and swimming, while also receiving a lesson in safe electricity, a live line safety demonstration and bucket truck rides.

For more information, please contact Michael DeFreeuw at 260-625-3700, extension 416.



1,000,000
HOURS ~ NO LOST TIME INJURIES

NORTHEASTERN REMC ~ 2004-2011

Seven years is a long time for any business with a large group of employees to operate without a lost time injury. But when you take into consideration the often dangerous situations encountered working for an electric company, reaching that point is even more impressive.

But Northeastern REMC employees did just that. Recently the employees surpassed one million hours without a lost-time injury. Such an accomplishment is rare, and is one of which the employees are very proud.

"It took our employees seven years

and two months to hit this milestone. Through safety meetings and on-going training we continually stress the importance of on-the-job safety. And they have all listened and learned," said Lynn Saunders, Northeastern's safety, training and risk management coordinator. "All of our employees, whether they're out repairing storm damage, replacing poles and wires, or inside the office working with our members, share equal responsibility for getting to this point. It takes everyone working together, every day of the week," he added.

A New Year's Resolution that doesn't involve diet or exercise!

Check for and eliminate electrical hazards in your home.

- Replace missing or broken wall plates.
- Check for loose-fitting plugs.
- Check for outlets overloaded with multiple adapters and plugs.
- Have an electrician check outlets or switch plates that are discolored or warm to the touch.
- Replace electrical cords that have frays or broken casing.
- Make sure light bulb wattage matches the fixture requirements.
- Make sure outlets have Ground Fault Circuit Interrupters(GFCIs) in the kitchen, bathroom, laundry and outside.

Save power. Earn money. \$200 to be exact!

Did you know that if you own a 50 gallon or larger electric water heater, you may be able to qualify for a \$200 rebate from Northeastern REMC?

Qualifying for the rebate is easy. Just allow Northeastern to install a load management switch on your water heater and agree to a few simple rules, and you will begin getting monthly bill credits totaling \$200.

The purpose of the load management switch is to help Northeastern lower power demand. Northeastern is charged for demand as well as kilowatt hours when it purchases the electricity we provide to our members. This switch allows us to have some control in the amount of demand being consumed at any one point in time. This enables us to better control our costs. The result is a savings for Northeastern and you. And since the water heater stores 50 or more gallons of hot water, it is very unlikely that you will ever notice when the load switch is operating.

For qualifying details and to obtain an agreement form, contact Energy Advisor Doug Ferrell at 625-3700, extension 436 or d_ferrell@nremc.com.

Rebate does not apply to current load management switch participants.

TWO NEW PROGRAMS COMING IN EARLY 2012!



"Bank-a-Watt" - our new electric pre-pay program.



"Energy Check" - the new online energy management tool.

Details will be available to you in your bill, in the Light Post and on our website soon.

Members can select own water heater in new REMC rebate program

Northeastern REMC's newly revised water heater program allows co-op members to now select their own brand of 50 gallon or larger electric water heater beginning January 1 and receive a \$100 energy bill credit.

Specific terms and conditions of this agreement include:

1. Member acknowledges purchase of a new 50 gallon or larger electric water heater by returning a completed rebate form and proof-of-purchase receipt within 30 days of purchase to NREMC. Forms can be emailed, faxed, mailed or dropped off in person.
2. The electric water heater must be

installed on NREMC lines to be eligible for the rebate. Installation of the water heater and contacting NREMC to schedule an appointment for verification are the responsibility of the member. A rebate credit will not be issued until inspection is complete.

3. No water heater fueled by any source other than electricity is permitted in the home's water heating system. Member should consult with the NREMC energy advisor if there are compliance issues.

4. NREMC will provide a \$100 credit to member's electric bill only after verification has been completed.

5. Only one (1) rebate will be given per address in any 15 year period.

6. Qualifying units do not include:

- A unit used for geothermal storage
- More than one unit plumbed in series
- A unit for seasonal use
- A unit with less than 50 gallon capacity
- A unit installed within a home/business on a non-permanent foundation

This program replaces any other water heater program offered by Northeastern.

It saves you money. It costs you nothing. Merry Christmas.

Who doesn't like a good deal that costs you nothing? That's why so many people love the Co-op Connections Card program offered by Northeastern REMC. It costs you nothing, but puts money back in your pocket. And with the holidays approaching, we could all use some of that!

Getting a discount is simple - just show or mention your card to participating merchants and receive their advertised special. The offers include discounts to over 325 businesses within 25 miles of Columbia City. These include gift shops, florists and local restaurants, and services such as automobile repair, carpet cleaning, car rentals, and hotels, to name just a few.

And the discounts aren't just limited to this immediate area. Offers

are available from many national chains around the country... especially handy if you travel during the holidays.

Find out about these incredible deals by going to our website - nremc.com - and clicking on the Co-op Connections Card box. It will take you to the pages filled with local and national specials. The program also offers discounts on prescriptions, and hearing, vision and dental services. iPhone and Droid apps are also available.

If you don't have Internet service, contact our member service department for a list of local discounts.



Wholesale Power Cost Tracker to change

Notice is hereby given that Northeastern Rural Electric Membership Corporation ("Northeastern") intends to file before the Indiana Utility Regulatory Commission (IURC) a request for approval of the application of the Wholesale Power Cost Tracking procedures established by the Indiana Utility Regulatory Commission in Cause No. 34614.

This request is being made by Northeastern as a result of a change in Wabash Valley Power Association, Inc.'s (WVPA) wholesale rates to its member Rural Electric Membership Corporations (REMC). Northeastern is a member of WVPA. This change in wholesale rates will be passed through to its member systems' retail rates via the wholesale power cost tracking procedure.

This action will result in an increase in the wholesale power cost tracker included in the rates charged by Northeastern. The increase is expected to be \$0.002614 per kWh.

This increase will result in an increase to all consumers of Northeastern receiving service pursuant to the schedule of tariffs set forth in Appendix A on file at the IURC showing the revised schedule and the rates to the members which will be effective for the first practical consumption period following approval of such revised rates by the IURC (applicable to January, 2012 consumption).

Any objections to this filing should be addressed to either the Secretary of the IURC, National City Center, 101 West Washington Street, Suite 1500E, Indianapolis, IN 46204 (317) 232-2701 or the Secretary of the Indiana Office of Utility Consumer Counselor (OUCC), 115 West Washington Street, Suite 1500 South, Indianapolis, IN 46204 (317) 232-2494.

DATE: November 15, 2011

(ORU funds - cont.)

the needs of applicants which aren't being met through other sources. Funding for political contributions and payment of utility bills will not be considered. Applications for funds are reviewed by the trustee board three times a year.

Applications for funding and additional details are available online (nremc.com) or at Northeastern's Columbia City office. Questions can be directed to our member service department at 260-244-6111 or 625-3700.

If you would like to participate in our local Operation Round Up program by rounding up your electric bill, please call our office or visit our website at nremc.com. Signing up is very easy, and is greatly appreciated

by friends and neighbors in need right here in our community. A few cents a month can add up to a big difference.

The following organizations received Operation Round Up funds in 2011:

- Camp Whitley
- Boy Scouts of America, Anthony Wayne Chapter
- Community Harvest Food Bank
- Arcola Volunteer Fire Department
- Donovan Kessler Little Swimmers Scholarship Fund
- Junior Achievement/Whitley County
- Boy Scout Troop 84
- Helpline of Whitley County

Holiday office hours

Northeastern's office will be closed December 23 and 26.

A drive-up payment deposit box is available in front of our office for your convenience. Payments can also be made online at nremc.com or by phone.

In case of emergency, our telephone is answered 24 hours a day, seven days a week.

Farmers' Almanacs now available

A limited supply of free 2012 Farmers' Almanacs are now available in our lobby.



Clothes washer rebate ending December 31

Only a few days remain to claim a \$50 rebate for purchasing an ENERGY STAR clothes washer. Rebate forms must be submitted by Dec. 31. Details and a downloadable rebate form can be found on nremc.com.

2012 Student Art Contest calendars now available

A limited supply of calendars are now available free of charge at Northeastern REMC's office. This 2012 calendar features artwork from students locally and throughout Indiana from grades K-12.

Holiday office hours

Northeastern's office will be closed December 23 and 26.

A drive-up payment deposit box is available in front of our office for your convenience. Payments can also be made online at nremc.com or by phone.

In case of emergency, our telephone is answered 24 hours a day, seven days a week.

Farmers' Almanacs now available

A limited supply of free 2012 Farmers' Almanacs are now available in our lobby.