



When road conditions are slick, careful driving does the trick

You play a vital role in sending our crews home safely to their families every day.

Winters in Northern Indiana can make driving more challenging for everyone. It's important to allow more room for our crews when road conditions become treacherous. In addition to the challenges posed by snow and ice, winter weather often brings reduced visibility.

Although routine electrical line work is done during daylight hours, emergencies can happen anytime, including during snowstorms and often in the middle of the night. If you see an NREMC truck, warning signs, or flaggers during the day or night, be sure you're slowing down and keeping a safe distance from all people, trucks, and equipment. Being alert while driving is essential, especially when roadways may be hazardous because of snow and ice. Your patience and careful driving not only ensure your safety but also help protect the workers who are out in harsh conditions to keep our roads safe and the electricity flowing.

Your safety is important to us too!

Do you know what to do if you slide off the road and hit a pole? Don't turn a minor accident with a utility pole into a life-threatening situation. Go to page 5 and read what to do if you're in an accident involving a pole or power lines.



INVESTING IN THE FUTURE

2024 Youth Programs



APPLY BY MARCH 1

Camp Kilowatt | June 5 - 8, 2024

Learn more at nremc.com/camp.

Northeastern REMC will sponsor four students for the 2024 Camp Kilowatt at Camp Tecumseh in Brookston, Indiana. This fun, powerful, and unique camp experience is designed for students entering seventh grade in 2024. Students will learn about electricity generation and transmission, plus electric safety and participate in activities like horseback riding, bucket truck rides, rock climbing, archery, zip-lining, swimming, and more.



Cooperative CALENDAR of STUDENT ART CONTEST



APPLY BY MARCH 29

Cooperative Calendar of Student Art Contest

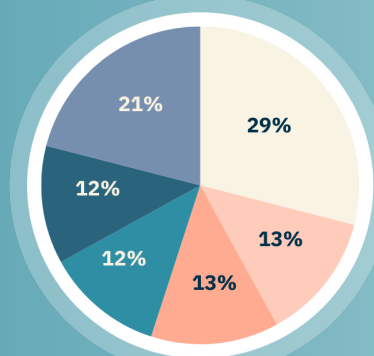
Learn more at nremc.com/artcontest.

The art contest is back for another year! If your child is a kindergarten through high school student, they can submit their artwork for a chance to win \$200 and be featured in next year's calendar. You do not need to be a NREMC member to participate. Did you know? Artwork from Whitko Jr./Sr. High School has been selected and displayed in each calendar for over 20 years.

ENERGY FAQ

What uses the most
power in my home?

We often get asked about what uses the most electricity inside the home. According to EnergyStar, heating your home uses more electricity than any other appliance or system in your home.



- Heating
- Electronics
- Cooling
- Water heating
- Appliances
- Lighting

Source: energystar.gov



Youth Tour to Washington, D.C. | June 11 - 18, 2024

Learn more at nremc.com/tour.

Indiana Youth Tour allows two young Hoosiers to visit the nation's capital, experience American history, learn more about government, and better understand their electric cooperative. Students participating in the trip will visit the Flight 93 memorial, Gettysburg battlefield, Arlington National Cemetery, National Museum of the Marine Corps, and Smithsonian museums. The delegation will also tour the National Mall memorials, take a night cruise on the Potomac River, and much more. NREMC will be selecting two high school juniors to attend.



Powering The Future Scholarship by NREMC

Learn more at nremc.com/scholarships.

We will select two high school seniors from eligible applicants to receive \$1,000 in college scholarships! To apply, students must meet the qualifications listed on our website, complete and return the application, and provide the necessary documents. Selection criteria are based on academic achievement, school involvement, community involvement, and recommendations.

A smart thermostat can help with your heating cost

Having the ability to adjust your smart thermostat from your phone can help you make changes that will help with your overall heating costs. You can schedule your thermostat to be lower when you're not home and warmer when you arrive home. Plus, once you join our Peak Thermostat Program, you'll get a \$100 bill credit the first year and \$50 every additional year you stay in the program.

Learn more at nremc.com/peak.



How to avoid a deep-freeze disaster

Frigid temps aren't hard just for people and animals but for the pipes in our homes too! Although you may want to turn down your thermostat to save on your electric bill, freezing weather is not the time to do that. The amount you save on your electric bill will not compare to the repair bill for frozen and busted pipes.



According to Consumer Reports, when temperatures are 20 degrees or below, homeowners should keep an eye on pipes, especially if they have uninsulated pipes or spaces that are uninsulated. Below are a few tips to help your pipes this winter.



- Keep garage doors closed, especially if there are water lines in the garage.
- Allow cold water to drip from faucets served by exposed pipes. This trickle of water will help keep water moving and prevent pipes from freezing.
- Open bathroom and kitchen cabinet doors to allow warmer air to circulate around the plumbing.

If you plan on being away from your home for a vacation, be sure to keep your thermostat no lower than 55 degrees. If you have a friend or trusted neighbor, it's a good idea to have them check on your home during cold snaps.

Round up your electric bill and help make a difference

Since 2002, NREMC members have contributed to Operation Round Up by rounding up their monthly electric bills. If you haven't enrolled in Operation Round Up, the new year is a perfect time to do so! The average contribution per year is around six dollars. Just imagine the impact we can have when we all participate. Call member services and ask to join Operation Round Up or go to nremc.com/roundup to enroll.



Above: Community Harvest Food Bank was one of several community organizations chosen to receive an Operation Round Up donation last year.

Thank You

We want to thank the members who donated to Project Christmas Stockings for Whitley County Seniors, ensuring the Autumn Trace Senior Community was not forgotten during the holiday season.

Power Outage Updates

Did you know we post updates about power outages on our Facebook page? While we strive for the reliability our members have come to expect, sometimes storms or vehicle accidents will cause interruptions in service. Be sure to follow us at facebook.com/nremc.

New Year Less Mail

Sign up for paperless billing to reduce the clutter in your mailbox this year. Go to nremc.com/paperless to learn more and to sign up.

Contact Us

memberservices@nremc.com

888-413-6111
nremc.com

Learn more at nremc.com/roundup.



STAY IN THE CAR

Don't turn a minor accident with a utility pole into a life-threatening situation.

Knowing what to do if you're in an accident and power lines come down on or near your vehicle is essential. The car can become energized, but people inside will remain safe if they don't get out of the car. Downed power lines still may be energized. The electric current from a downed line can shock or electrocute people as far as 35 feet away from the line. If there is no smoke or fire, stay put and call 911 immediately. Below are more safety tips for a car accident involving power lines.

- If you see someone in direct or indirect contact with a downed line, do not touch them.
- Never attempt to use an object like a broom or stick to move a downed power line or anything else in contact with it. That item will become energized.
- If you see bystanders running toward you to help, tell them to stay away from the vehicle so they do not get electrocuted.

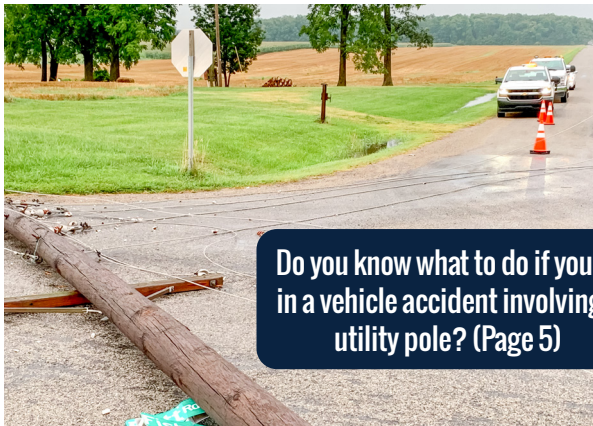


What if my car is on fire and I need to exit the vehicle?

If you must exit, follow these important steps.

- Open the door without touching the metal door frame.
- Jump with both feet together so both feet land at the same time.
- Shuffle away so the toe of one foot shuffles forward along the length of the other foot, ensuring both are in constant contact and always touching the ground.
- Keep shuffling 30 or more feet until you are safely away from the car and power line.
- Please do not attempt to get back into a vehicle in contact with a power line after you are safely away.

In this issue:



Do you know what to do if you're in a vehicle accident involving a utility pole? (Page 5)



Learn about 2024
Youth Programs
(Page 2 & 3)

Plus ...

- Help send our crews home safely to their families every day (Cover)
- Avoid a frozen-pipe disaster (Page 4)
- What uses the most electricity in your home? (Page 3)
- Learn how your small change can change lives (Page 4)

... and more!



LIGHTPOST

January/February 2024

NORTHEASTERN REMC
A Touchstone Energy® Cooperative



888-413-6111 nremc.com