



Join us for an hour, and power up your energy knowledge!

Hundreds of dollars per year in energy savings are now available for families through the Inflation Reduction Act. **But what does that mean for you?**

Hear from the experts



Jill Miller

Indiana & NW Ohio
Sr. Territory Manager



Blake Peterson

Owner



We're bringing in the experts to share more about the **tax credits and rebates** available when you're making energy-efficient improvements to your home.

**WINDOWS • DOORS • HEAT PUMPS
WATER HEATERS • AIR CONDITIONERS**

We'll also talk about who qualifies for the incentives, how to time your purchase strategically, and how to follow the instructions to claim your valuable tax credits and rebates.

RSVP by May 16

Please join us for this FREE event!

| **WHEN** | Thursday, May 18

| **WHERE** | Autumn Ridge Golf Club

| **TIME** | 7:00 p.m.

| **RSVP** | Go to nremc.com/ph or call
1-888-413-6111 between 7:30 a.m. - 4:00
p.m. Monday through Friday.



Celebrate safely this summer

Graduations, weddings, and birthdays are all reasons to celebrate, but be sure you're doing so safely. If you're using balloons, keep them indoors. Balloons can break loose from their strings and blow into overhead power lines with one gust of wind, even the balloons are not filled with helium. Mylar balloons are metal-coated and can conduct electricity when they come into contact with power lines. This will cause a short circuit or power surge, leading to large-scale power outages, melted electrical wires, and fires.



**Hold on to
those balloons!**

If you see a balloon that has made contact with a power line or floated into an electrical substation, never attempt to retrieve it yourself. Keep yourself, your belongings, and all other items and people at least 20 feet away. Call NREMC at 1-888-413-6111 and 911 if there is immediate danger, like a fire or any explosions.



Electric safety is as important on the sea as it is on the land

Electric safety is probably the last thing that crosses anyone's mind on a leisurely summertime boat ride. But because water and electricity are a deadly combination, brush up on some boating safety rules before taking off. Boaters should constantly be aware of the location of power lines. That means paying close attention when raising or lowering the boat's mast or spar and

ensuring drying sails and sheet lines don't blow into power lines. Below are a few more tips to keep in mind:

- When fishing, check for overhead power lines before casting your line.
- If your boat accidentally comes in contact with a power line, whatever you do, don't jump in the water. Stay on board, and don't touch anything made of metal. Don't leave the boat until it has moved away from the power line.
- If you notice a tingling sensation while swimming, the water could be electrified. Get out quickly, avoiding metal objects like ladders.

Find more safety tips at nremc.com/blog.



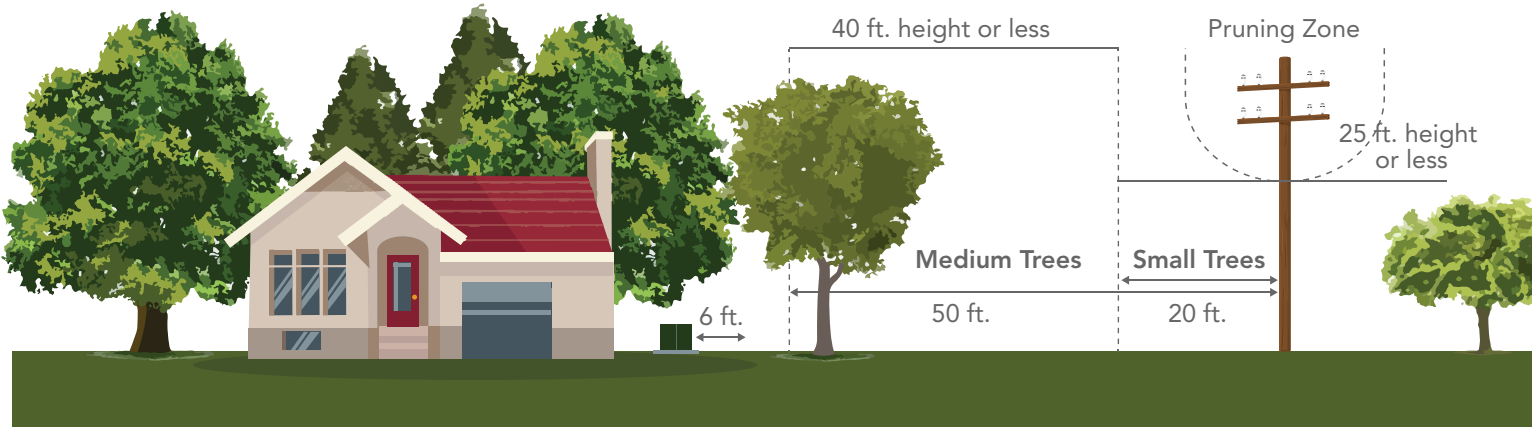
Know what's below and always call before you dig

As you're planning your summer projects, be sure to call or go to indiana811.org two business days before you begin your project to have all utility lines marked. Scan the code to the right to start your request!





The taller a tree will become, the further it needs to be from overhead lines



Are you planting new trees soon? Be sure to choose the right tree for your space

SMALL | <25 FT

If planting within 15 feet of power lines



Flowering Crabapple



Flowering Dogwood



Sweetbay Magnolia



Serviceberry



Redbud



Wafer-Ash



Common Hawthorn

MEDIUM | 25-40 FT

Plant minimum 20 feet from overhead lines



Flowering Crabapple



Flowering Dogwood



Sweetbay Magnolia



Serviceberry



Redbud



Wafer-Ash



American Arborvitae



Junipers



Japanese Yew



False Cypress



Common Hawthorn

LARGE | 40+ FT

Plant 50+ feet away from overhead lines



Norway Maple



Linden or Basswood



London Plane



Ginkgo



Sweetgum



Oak



Sugar Maple



White Pine



Austrian Pine



White Firs



Blue Spruce

Consider the following when selecting a tree:

| HEIGHT | Will it come within 10 feet of power lines when it's fully grown?

| CANOPY SPREAD | How wide will the tree grow?

| GROWTH RATE | A slow-growing species is typically stronger and lives longer than fast-growing species.

| SHAPE | A columnar tree grows in less space. Round or V-shaped trees provide more shade.

TREES NOT SUITABLE NEAR POWER LINES

Catalpa • Poplar • Silver Maple • Boxelder • Willow • Elm
Black Locust • Cottonwood • Tree of Heaven • Mulberry

Local youth awarded NREMC scholarships

For the past several years, we've been awarding two \$1,000 scholarships to teenagers in our service area. We recently selected two high school seniors to receive this year's scholarships.



Molly Abel
Churubusco
High School

Molly Abel of Churubusco will be heading to the University of Saint Francis to study radiology after graduating from Churubusco High School in June. Among her impressive résumé of accomplishments, including being student council president, she has made significant contributions to her community. Abel has helped host a Veteran's Day assembly and dinner, volunteered at a blood drive for the American Red Cross, and helped lead a fundraiser to raise money for supplies for survivors of Hurricane Ian. In one of her recommendation letters written by her English teacher, Abel was commended for her compassion for others and recognized for her passion for life and learning.

Clayton Scott of Columbia City will also receive a \$1,000 scholarship from Northeastern REMC. Scott will graduate from Columbia City High School before studying finance at Purdue. Not only does Scott have multiple accolades as a student-athlete, but he has often been recognized for his academic honors. He is a member of the National Honor Society and consistently earns top grades. In a recommendation letter, his football coach spoke about Scott's dedication to his teammates and shared how his peers voted him as a team captain. Additionally, Scott is a groundsman on a tree crew for R&T Tree Service and has operated his own lawn care service for multiple years.



Clayton Scott
Columbia City
High School

Northeastern REMC makes its decision based on academic achievement, community involvement, and recommendations. There is no better way to encourage our local students to pursue higher education than giving them financial help.

To learn more about these annual scholarships or NREMC's other community involvement, visit nremc.com/community.

Lobby closed on Memorial Day

Our lobby will be closed
on **Monday, May 29**.

You can still manage
your account online at
nremc.com, and call us if
you need us.

Unclaimed capital credits

Please be sure to check
the list of unclaimed
capital credits
for 2021 at

nremc.com/unclaimed.

Now that capital credits
are issued in the form
of bill credits, this
reduces the number of
unclaimed funds. Please
contact us if you'd like
to receive a copy of the
list through the mail.

Contact Us

memberservices@nremc.com

888-413-6111
nremc.com



STAYING SAFE AFTER A STORM

Think about safety before cleaning up after severe weather passes through.

Blue skies may quickly return after a severe thunderstorm, but that doesn't mean the danger is over. Many homeowners will immediately go outside to assess the damage as soon as the rain ends. We want to make sure our members are staying safe when doing so.

Even if you still have power at your house, keep your eye out for power lines dipping down from the poles or in the yard or road. If you see one, assume it is a live line and stay away from it. Call 911 immediately.

If you clear large amounts of broken, splintered, or sharp debris, wear proper protection, like gloves and safety glasses, to prevent injuries.

Stay away from damaged buildings or structures. If a building has been subjected to flood waters or high winds, it may not be structurally safe. It's best to stay away from these types of structures until professionals can assess the extent of the damage.

If large trees are damaged or have fallen over, a professional tree service might be the best option to handle the cleanup. Only tend to tree cleanup if you have experience with proper chainsaw-operating protocols. (See the box below for chainsaw safety tips.) Additionally, get help lifting heavy or bulky objects. If you lift too much on your own, you could hurt yourself.



"Always assume a downed power line is live. Downed lines pose a dangerous threat in areas where individuals are clearing fallen trees and branches from roads and lawns. If you see a downed power line, call 911 immediately, and stay at least 30 feet away from the lines while you wait for someone to secure the area."



Jared Boggs
Safety Coordinator



Chainsaw safety reminders



- Wear appropriate safety gear: chaps, boots, gloves, and eye and hearing protection.
- Keep both hands on the saw, and never take your eyes off the bar as you cut. (Note: it's called the bar, not the blade)
- Plan your cut so you know exactly where the saw's bar will exit the log.
- Don't be caught by surprise when you feel the saw's pull. Cutting on the bottom of the bar pulls you toward the log, and cutting on the top of the bar pushes you away.

In this issue:



Plus ...

How to safely clean up after severe weather passes through (Page 5)

- The best place to plant new trees (Page 2)
- Chainsaw safety reminders (Page 2)
- Summer boat safety (Page 3)
- Hold on to those balloons (Page 3)
- Know what's below before you dig (Page 3)
- NREMC scholarship winners (Page 4)
- Do you have unclaimed capital credits? (Page 4)



LIGHTPOST

May/June 2023

NORTHEASTERN REMC
A Touchstone Energy® Cooperative



888-413-6111 nremc.com